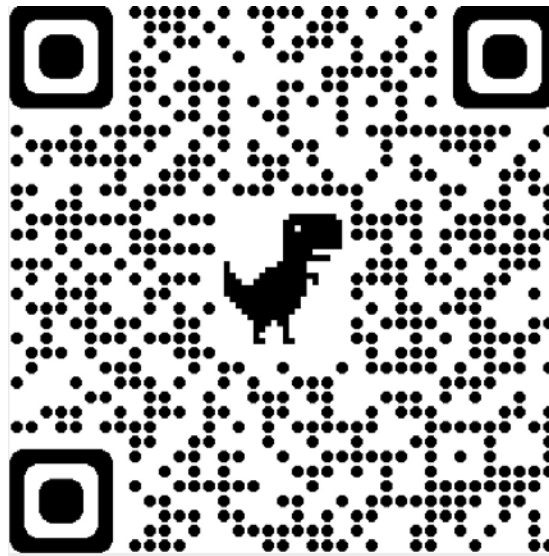


2022
WOMEN'S DEVELOPMENT PROGRAM
UPDATE

WAG COMMITTEE MEETING MINUTES

- All information contained in this update is “OFFICIAL”, as all minutes have been approved and posted on the website.



2022 DEVELOPMENT PROGRAM CLUB OF THE YEAR – REGIONAL NOMINATIONS

Region 1:
Black Diamond
Gymnastics
UT

Region 2:
Ascend Gymnastics
WA

Region 3:
World Champions
Centre
TX

Region 4:
Flips Gymnastics
MN

Region 5:
Buckeye Gymnastics
OH

Region 6:
Rochester Gymnastics
Academy
NY

Region 7:
Hill's Gymnastics
MD

Region 8:
Georgia Elite
Gymnastics
GA

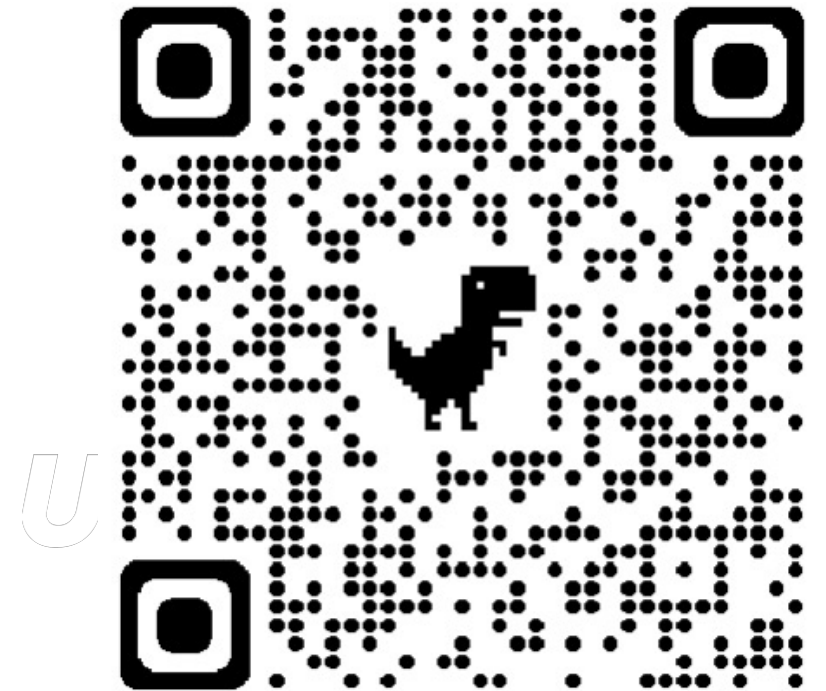
**CONGRATULATIONS
TO:**

ASCEND GYMNASTICS
Auburn, WA



RULES & POLICIES

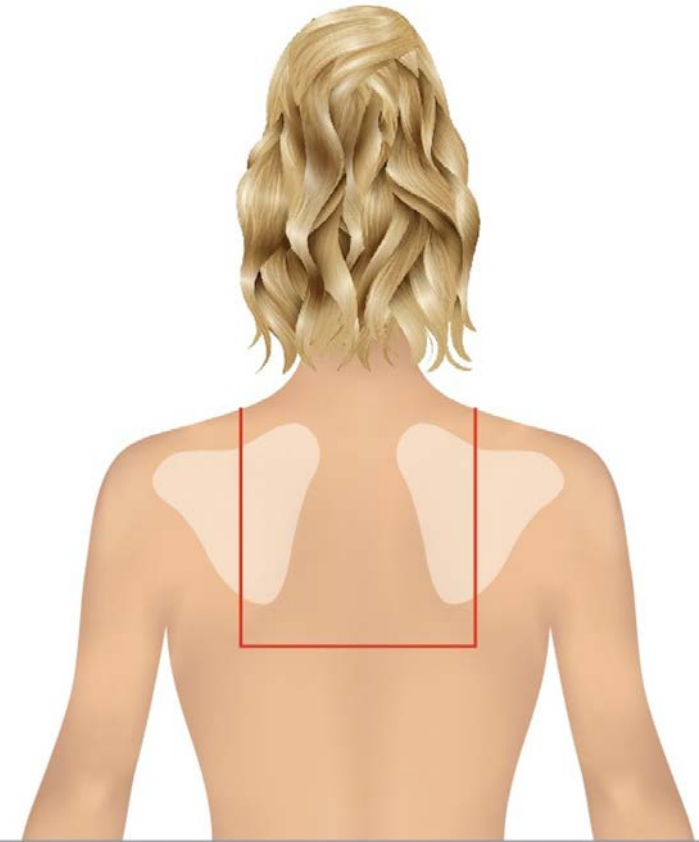
- Clarifications/ updates
- Changes (NEW!)



BACKLESS LEOTARD

Updated for 2022–2023 season

- When the open area visually extends more than approximately 2 inches below the bottom of the scapula (shoulder blade)
- When the open area extends past the vertical midpoint of the scapula
- When the open area is NOT filled in with mesh or flesh-colored fabric.
- **Racerback**



Backless leotards: Unless the open area is filled with mesh or flesh-colored fabric, a leotard is considered backless with the open area visually extends:

- lower than 2 inches (approximately) below the bottom of the scapula (shoulder blade)
- wider than the vertical midpoint of the scapula

ALLOWABLE ATHLETE APPAREL

- Ankle length tights

May be worn under **OR OVER** the leotard™

ATHLETE RESIDENCY / STATE CHAMPIONSHIPS

The physical location of the gymnast's training facility determines the residency of the gymnast.

- If the gymnast resides in one state and her training facility is located in another state:
- An athlete **must** compete in State meet in the state in which their training facility is physically located.

ALL-AROUND QUALIFIERS TO REGIONALS

To allow State representation from all states:

If a state has no AA qualifiers to Regionals (at each allowable level), the gymnast with the highest AA will be invited to the Regional Meet.

- IES not eligible

ALTERNATES: EASTERNS / WESTERNS / NATIONALS

At Level 9 Easterns and Westerns, and Level 10 Nationals, alternates will be allowed to be on the field-of-play and join their respective regional team for formal march-in.

APPARATUS SPECIFICATIONS

- Hand placement (Round-off entry) mat:
Must be a **minimum of 39.4 x 51.2 inches in length** and cannot exceed 5 cm (2 inches)



~~If a Meet Director cannot supply the above mentioned Round-off hand placement mats, they may allow clubs to bring their own, provided the mat meets the criteria as stated above.~~

- Clubs may NOT bring their own competitive equipment to be used by athletes during a competition.

APPARATUS SPECIFICATIONS

- **Spotting enhancements**

When a raised surface is needed to spot release moves, a coach may use more than one spotting block and/or folded mat, provided that everything is removed immediately after the release move is performed.

APPARATUS SPECIFICATIONS

- **Beam matting:**

If available (not required): maximum of 9 inches using Sting mats, 4-inch throw and / or 8-inch skill cushions may be placed on top of allowable CLM's in ALL matted areas (under the Beam and / or dismount area.)

- **Floor matting:**

Two mats in opposite corners of the same diagonal are allowed.

JUDGING

- Clarifications/ updates
- Changes (NEW!)



JUDGES AFFILIATION

A judge is considered affiliated with a gymnastics club when:

- They critique or coach more than once a month on a regular basis at a specific club.

All judges are responsible for making assigners aware of any affiliations.

JUDGES LODGING

- Meet Directors are **strongly encouraged** to provide single room accommodations when a hotel stay is required, at no additional cost to the judge.
- A judge may request single room accommodations if not provided by the Meet Director.
 - If necessary to share the cost of the room with the Meet Director, the **judge will pay no more than the difference between the actual cost of the room and the standard national IRS rate for overnight accommodation.**

JUDGES COMPENSATION

- The daily number of paid hours is calculated from the report time to the end time of the meet.
- The meet is complete when all scores are entered, and any inquiries settled.

ELECTRONIC DEVICES ON COMPETITION FLOOR

If a judge is using an electronic device on the floor to record scoring worksheets:

Judges must turn off messages, email notifications, etc. by switching their device to **airplane mode.**

DEVELOPMENT PROGRAM CODE OF POINTS

DEVELOPMENT PROGRAM OPTIONAL CODE OF POINTS

- Clarifications/ updates
- Changes (NEW!)



Women's Artistic Gymnastics
2022-2026
First Edition

INJURY FALL TIME

- If an injury occurs during a fall, the fall time will begin **when the medical assessment is complete**. If no injury occurs, the regular fall time process should be followed.
- Applies to both Optional and Compulsory athletes

EQUIPMENT FAILURE

- If an athlete falls due to equipment failure:
 - Judging will resume at the point of interruption or the series / combination when the equipment failure occurred.
 - Any deduction taken prior to the fall is still applicable.
 - No longer can an athlete stop and repeat a routine.
 - Applicable to Bars, Beam and Floor (music failure)

CHALK MARKINGS

- Chalk markings are **ALLOWED** to be placed on landing mats as a visual cue. All markings must be removed after the athlete completes competition on that event.
- Applies to Vault, Bars and Beam.

REPEATED RESTRICTED ELEMENT

Level 8 & 9 (Bars, Beam, Floor):

- The first time a restricted element is performed it receives "0" Value Part (VP).
- The same element is performed a second time and meets the requirement to receive a VP.
 - There is NO deduction for performing a 2nd restricted element since the first time the element received a 0 VP

Example: Level 9 gymnast attempts a Pak salto and does NOT touch the bar = No VP awarded.

Gymnast remounts and performs the Pak salto and catches the bar and performs a glide = VP awarded.

VAULT



VAULT NUMBER ANNOUNCEMENT

At State Meets and above:

The gymnast and coach **may either** display the vault number of the vault that she intends to perform **OR VERBALLY ANNOUNCE the number directly to the judge.**

NEW DEDUCTION FOR LEVEL 6

Failure to land on any part of the bottom of the feet first on Tsukahara & Round-off entry vaults:

Previously: VOID

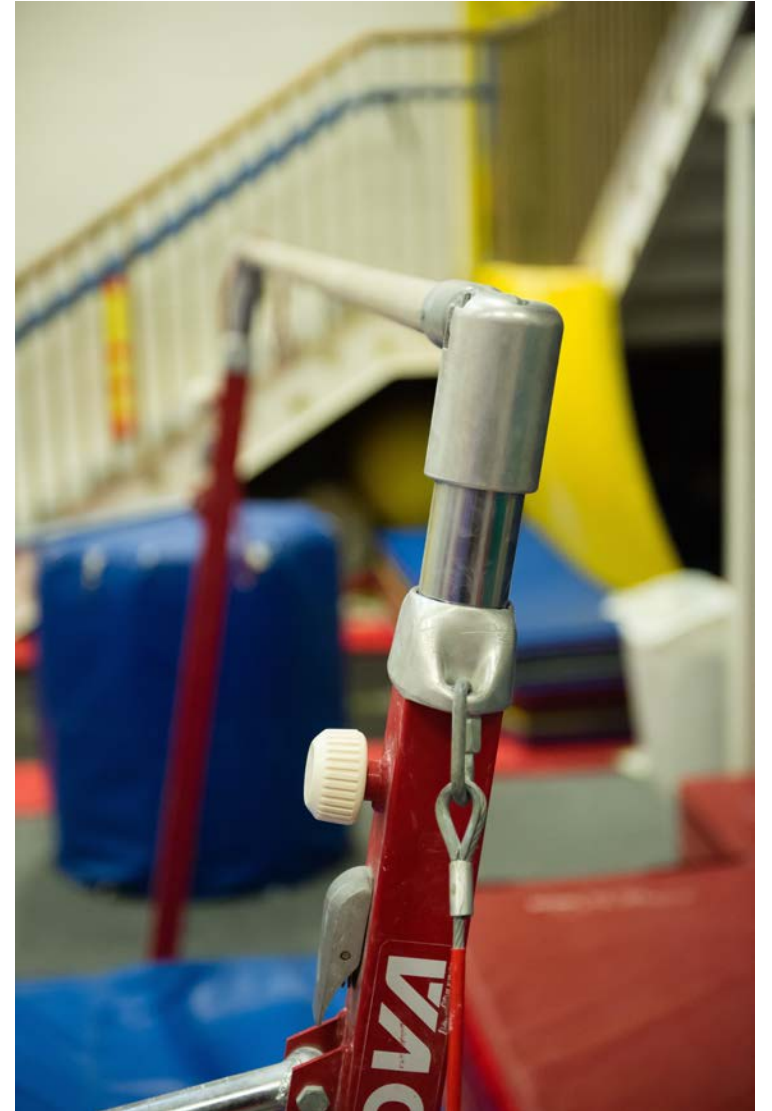
Changed to: 1.00 deduction

VIDEO REVIEW

For Levels 8 – 10 ONLY:

If first Vault is awarded a zero (0) for failure to land on any part of the bottom of the feet first, **immediate video review is allowed (if available)**. Review must be completed prior to athlete attempting the 2nd vault.

BARS



LEVEL 3 DISMOUNT

Athlete now has **choice** to either perform a:

- Squat on

OR

- **Pike on**

Before jumping off.

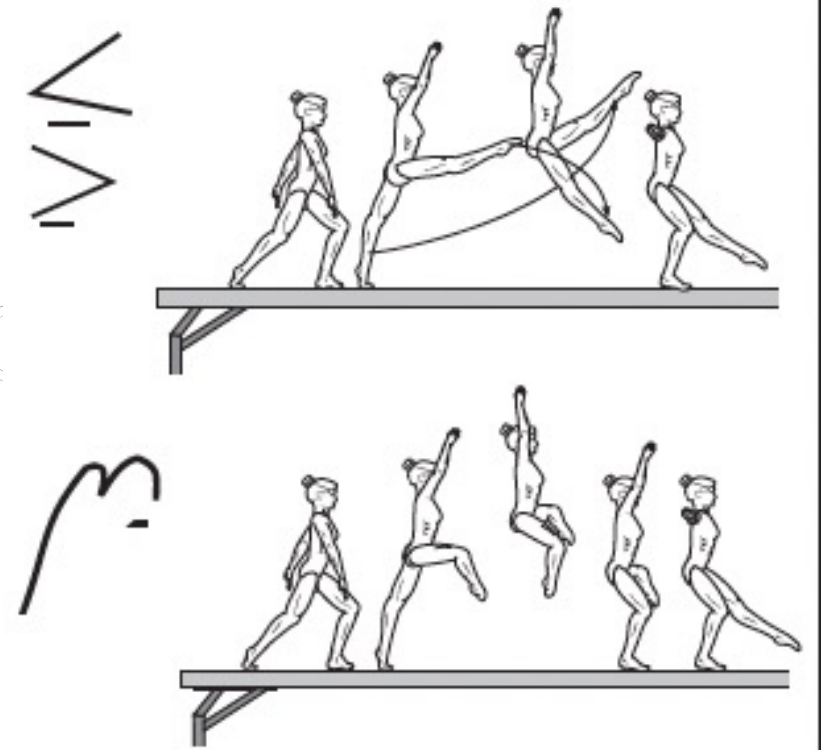
BEAM



ADDITION TO CAT LEAP DESCRIPTION

Scissor leap forward or backward with bent legs – parallel or turned out (Cat leap) or extended legs (Hitch-kick)

- Applies to Beam and Floor



NEW ELEMENT – WHIPPLE

Free split jump with change of legs (minimum of 30° leg separation) prior to split position, landing on 1 or 2 feet – approach from end of Beam

#1.301 (“C”) – WHIPPLE



FLOOR



OVERTIME DEDUCTION

Any inquiries submitted for an overtime deduction must be accompanied by a video.

- If no video is available, an inquiry may not be submitted.

LEVEL 9-10
BONUS
CLARIFICATIONS

MAXIMUM OF +0.10 AWARDED FOR "D/E" BONUS LEVEL 9 BARS

1st restricted or allowable "D/E"
element receiving Value Part (VP)
can be considered for +0.10 "D/E"
Bonus **ONE TIME ONLY.**

MAXIMUM OF +0.10 AWARDED FOR "D/E" BONUS LEVEL 9 BEAM & FLOOR

1st restricted "D/E" (Acro) element
receiving Value Part (VP) can be
considered for +0.10 "D/E" Bonus
ONE TIME ONLY.

REPEATED "D/E" ELEMENT CLARIFICATION LEVEL 10 BARS, BEAM & FLOOR

"D/E" Bonus can be awarded ONE TIME ONLY.

The first time a "D/E" element receives VP, but performed with a fall, no Bonus is awarded.

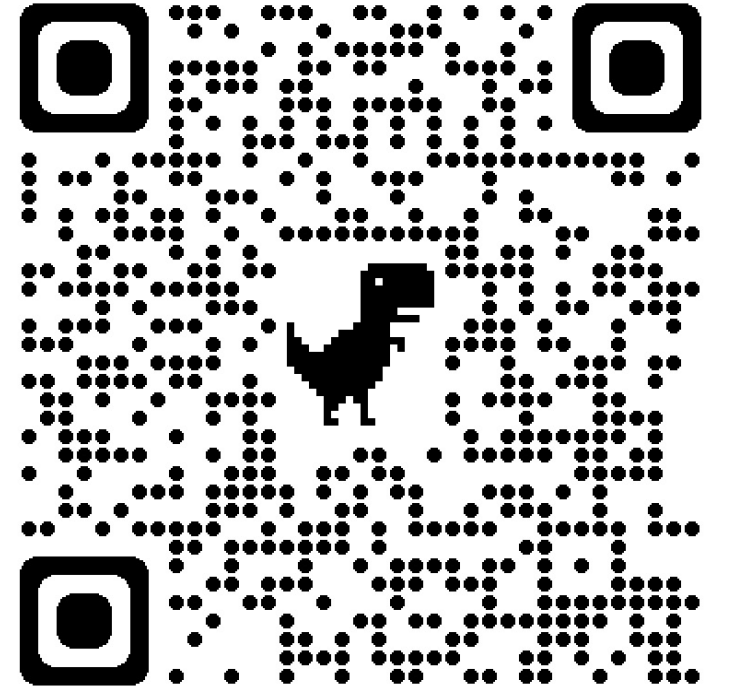
- Example: Gymnast performs a Tkatchev, touches the bar and falls = Award VP, NO bonus.

The second time the same "D/E" element receives VP, no fall occurred and element done in different connection, Bonus is awarded.

- Example: Gymnast remounts the bar and performs the Tkatchev again and catches the bar connecting to an overshoot to clear support = Award VP, DV Bonus, and CV Bonus.

OPERATING CODE

- Clarifications/ updates
- Changes (NEW!)



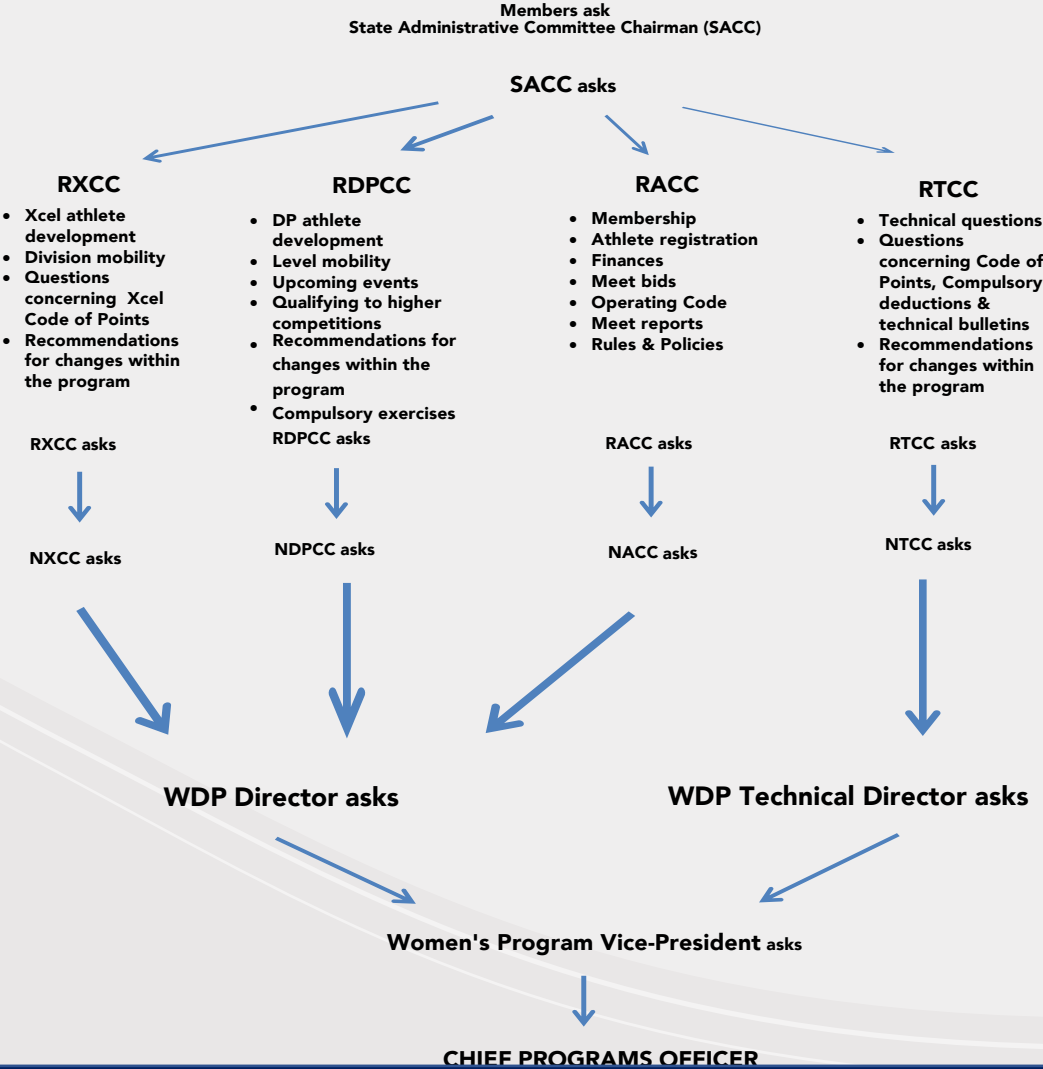
ELECTION PROCESSES

- Solicitation of nominations
RACC's and SACC's shall solicit nominations from their membership through **email** / regional newsletters and websites.
- The possible slate of nominees for any elected position shall be provided upon request by the respective committee chair (State, Regional, WPC)

FRIENDLY REMINDERS

"Women's Program HOT LINE"

Should questions arise, members should seek answers by following the "Chain of Command" described below:



Remember to utilize your volunteer leadership to help get answers to your questions!



You can find contact information for all chairs in the directory:



WHERE TO FIND WAG MATERIALS



USA GYMNASTICS TECHNICAL MATERIALS STORE

Go here to find:

Physical books

Full and mini sized:

- 2021 – 2029 Compulsory Book
- 2022 – 2026 Dev Code of Points
- 2022 – 2026 Xcel Code of Points



DIGITAL RESOURCES

Go here to find:

eBooks

- 2021 – 2029 Compulsory Book
- 2022 – 2026 Dev Code of Points
- 2022 – 2026 Xcel Code of Points

The End!!!

